

But before I can let myself go  
I hear a noise in the distance  
A scamper,  
A howl,  
A sign of existence.

I feel myself being lifted  
Onto what I had no clue  
But my body lay motionless  
So I had no choice but to go through

I felt the flow of water  
Streaming down my mouth  
The lord must have come to me  
In my time of doubt

I eagerly press open eyes  
My hero has left no hints  
All I can see in front of me  
Is a trail of paw prints

*Summer Tonsfeldt lives in Scottsdale and attends Pinnacle High School. She is 15.*



## Pinnacle Peak Dentistry PC

### Marshall Clayton, DDS



- Complete Family Dentistry Emphasizing Prevention and Cosmetics
- INVISALIGN - the Invisible Braces

**SAFEWAY SHOPPING CENTER**  
Pinnacle Peak and Scottsdale Road  
**480-585-3065**

## Desert Foothills Scenic Drive Memory Park, Part IV

### A Description of Proposed Memory Exhibits

*Courtesy of Friends of the Scenic Drive*

Much of our area's past is being lost as a result of rapid growth and development. To preserve our heritage, Friends of the Scenic Drive and the Greater Pinnacle Peak Association, which publishes *A Peek at the Peak (The Peak)*, are developing a Desert Foothills Scenic Drive Memory Park for the benefit of tourists and residents. In the May/June, July/August, and September issues of *The Peak*, we provided information about the park's Introductory, Time and Events, and People and Places exhibits. The article in this issue provides information about the park's Preservation exhibits.

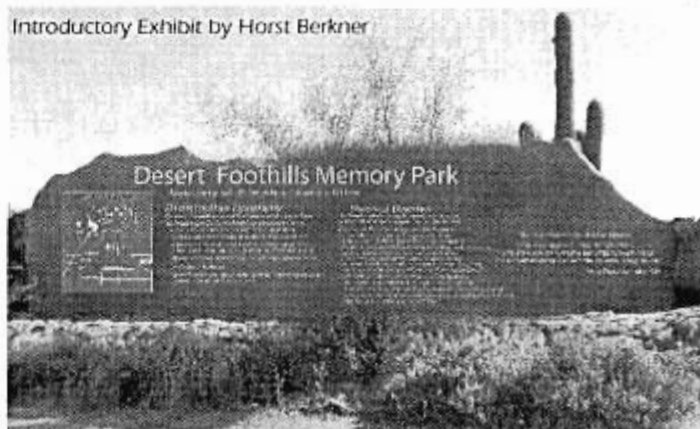
### Recap

The park will be created on the site of the current Scenic Drive exhibits and monument sign, which is located on the east side of Scottsdale Road, just south of Jomax Road in north Scottsdale. Since 1994, Friends has led the effort to enhance the site, creating exhibits about the Scenic Drive and Sonoran flora and fauna and modernizing the original large concrete monument sign. The park site (less than one-half acre in size) is on a section (640 acres) of state trust land that is included in Scottsdale's Planned McDowell Sonoran Preserve.

The proposed park will provide educational information about the history of the Desert Foothills and Pinnacle Peak areas and historical context for the Desert Foothills Scenic Drive section of modern-day Scottsdale Road, which will be enhanced using voter approved Bond 2000 funds. It is hoped that this effort will encourage residents in other parts of Scottsdale to create similar parks that describe the history of their parts of the city. It is also our hope that the creation of this park will bolster efforts to preserve the adjacent land.

### Introductory Exhibit

The back of the existing Scenic Drive monument sign

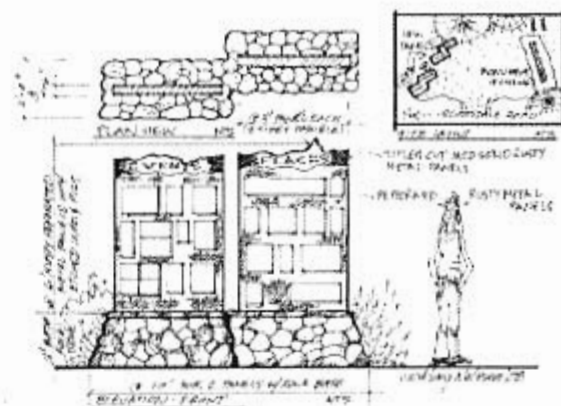


will be updated with information that introduces visitors to the Desert Foothills and the park's exhibits. The additional information will introduce the new exhibits and integrate them with the existing exhibits. The back of the sign will feature the title, "Desert Foothills Memory Park." Three large plaques will have a simple map denoting the Desert Foothills area, a general description of the landscape, and a brief historical overview. The map will show how the Scenic Drive relates to the Desert Foothills area. In addition, there will be the following quote, "It's our hope that the Scenic Drive inspires other communities to TAKE ACTION IN THE PRESERVATION OF natural beauties in their areas..." Vince Thelander, May 1966

## Memory Exhibits

The new "memory" exhibits that Friends is developing will take the form of plaques mounted on large stone and metal monuments. These exhibits will provide information about three topical areas: 1) Desert Foothills Time and Events, 2) Desert Foothills People and Places, and 3) Desert Foothills Preservation.

In the November issue, we will provide more details about the Preservation exhibit, which will provide information about organizations, ordinances, parks, and preserves related to desert preservation efforts in the Desert Foothills.



New Memory Exhibits by Marg Neissen

## Remembering Desert Foothills Preservation Efforts Scenic Drive Memory Park Exhibit

By Les Conklin

This exhibit, which will be part of the Desert Foothills Scenic Drive Memory Park, will identify and describe people and places that played a role in the history of the Desert Foothills. Plaques with old photographs and text will provide information about 36 subjects ranging from "Big Brownie" to "Dick Van Dyke," some of which are included in this abbreviated article.

# PERSONAL TRAINING: WHY PAY \$30 TO \$50 PER SESSION?

EDUFIT PERSONAL TRAINING GIVES YOU THE RESULTS  
YOU WANT WITHOUT COSTING AN ARM & A LEG



- RAISE YOUR ENERGY LEVEL ✓
- LOWER YOUR BODY FAT & LOSE WEIGHT ✓
- IMPROVE BONE DENSITY ✓
- MAXIMIZE YOUR FLEXIBILITY ✓
- BY APPOINTMENT ONLY = NO CROWDS ✓
- NO MONTHLY DUES OR ANNUAL MEMBERSHIP ✓

New Members  
Receive  
**30% OFF**  
Your First Package  
Of Sessions

**EDUFIT™**  
PERSONAL TRAINING STUDIO

*The Most Trusted Name In Personal Training*

**N. SCOTTSDALE**  
23425 N. Scottsdale Rd. • 480-563-1074

**SCOTTSDALE**  
7366 E. Shea Blvd. • 480-348-1011

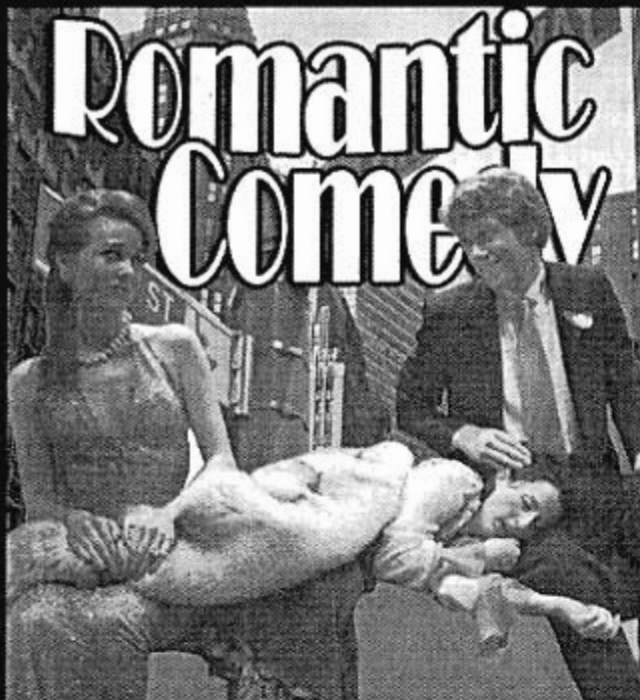
**PHOENIX**  
3147 E. Lincoln Dr. • 602-381-1011



DESERT  
FOOTHILLS  
@ THEATER

A program  
of the  
Foothills  
Community  
Foundation

'08-'09 SEASON



by Bernard Slade  
Directed by Elaine "E.E." Moe

**Nov. 6 -23**

Thurs.\*, Fri., & Sat., 7:30 p.m., Sun., 2 p.m.  
\*1st weekend only

CACTUS SHADOWS  
FINE ARTS CENTER BLACK BOX

*Romantic Comedy*, is an American classic  
armed with bright sophistication that is  
"achingly funny, touchingly tender,  
with a biting wit" -Windsor-Eton Post

**Tickets: \$14-17 Adults; \$7-\$10 Students**



Also supported by Adams, Kvittem-Barr and  
Arizona Commission on the Arts with support from  
National Endowment for the Arts

**To order, call 480-488-1981  
or visit [desertfoothillstheater.com](http://desertfoothillstheater.com)**

For the complete article and list of subjects, visit the Friends of the Scenic Drive Web site.

## Section V. Preservation Exhibit Topics

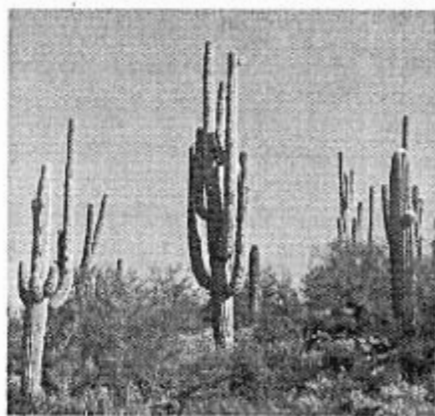
For many years, residents have fought to preserve the unique beauty of the Desert Foothills. These exhibits provide information about organizations and ordinances related to that effort.

### Black Mountain Conservancy

This nonprofit land trust that works to moderate development on the mountain, raising money to purchase land, sponsors awareness programs, and support the efforts of the towns of Carefree and Cave Creek to pass ordinances that protect hillsides and contain development. The conservancy works to protect the 250-acre preserve at the top of the mountain by keeping as much of the surrounding mountain as possible in its natural state.

### Cave Creek Association

Formed in 1949 to secure a paved road to Cave Creek, it later became the Cave Creek Improvement Association. In 1963, after the paving of Scottsdale Road to the new town of Carefree, the Cave Creek Improvement Association led the effort to create the Desert Foothills Scenic Drive to establish setbacks and protect the natural desert along Cave Creek and Scottsdale Roads from the development of gas stations and motels in the then vacant desert.



### The Coalition of Pinnacle Peak (COPP)

Founded in 1996, the group supports responsible land use, environmentally sensitive development, creation of the McDowell Sonoran Preserve, strengthening of Scottsdale ordinances to protect the environment, and the election of leaders who stand for the protection of quality of life in the Sonoran Desert.

### Desert Foothills Land Trust Parks & Preserves

These sensitive and protected Desert Foothills areas include the Herbert and Dorothy Watt Nature Preserve (7.6-acres), the Carefree Galloway Wash Preserve (11-acre), the Preserve at the Cave, the Caroline Bartol Preserve on Saguaro Hill (4.2

acres), the H.B. Wallace Preserve (78 acres), the Desert Enclave Preserve (20 acres), the Cottonwood Canyon Bosque Preserve, the P.A. Seitts Preserve at Go John Canyon (500 acres), and Jewel of the Creek (27-acre).

## Foothills Overlay

Established in 2003 by the City of Scottsdale, this effort was the result of neighborhood involvement to preserve the rural desert character of approximately eight square miles, generally between Dixileta Road to the north, Jomax Road to the south, 56<sup>th</sup> Street to the west, and 96<sup>th</sup> Street to the east. It limits overbuilding and supports the purposes of Scottsdale's ESLO, which helps protect and preserve the natural features north of the Central Arizona Project Canal.

## Desert Foothills Property Owners

This informal group of Desert Foothills property owners, established in the 1980s, has successfully advocated for the preservation of portions of the Desert Foothills annexed by Scottsdale. The group played an active role in the development and amendment of preservation-oriented ordinances including ESLO, Native Plant Ordinance, and the Foothills Overlay.

## The Desert Foothills Land Trust

Incorporated in 1991, this is a stable force for land pres-



ervation in the Sonoran Desert foothills area of central Arizona. Once land is acquired by the Desert Foothills Land Trust, the Trust assumes responsibility for the long-term management of the property, ensuring that the land remains forever in its wild state, undisturbed and undeveloped, for the pleasure and enjoyment of area residents and visitors today and tomorrow.

## Environmentally Sensitive Land Ordinance (ESLO)

This set of zoning regulations was initially adopted by the City of Scottsdale in 1991 to guide development throughout 134 square miles of desert and mountain areas of Scottsdale, including the Desert Foothills areas. Developers are required to provide open space (Natural Area Open Space, NAOS) on each parcel. NAOS areas are either undisturbed natural desert or where development has restored the desert terrain and vegetation to its natural condition.

## Friends of the Scenic Drive

Incorporated in 1994 to restore and publicize the Scottsdale

Road section of the Desert Foothills Scenic Drive, the nonprofit, with the assistance of the City of Scottsdale, installed new Scenic Drive entry signs and exhibits, painted utility boxes, and advocated for the protection and enhancement of Scottsdale Road section of the Scenic Drive. The group founded the annual Cookout at the Ranch to educate the public about the drive and desert preservation.

## Greater Pinnacle Peak Association (GPPA)

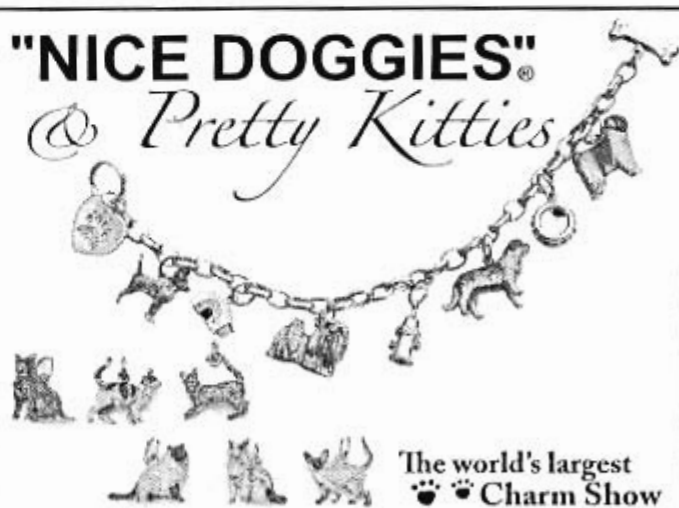
Formed as the Greater Pinnacle Peak Homeowners Association in 1977, it was established by residents of neighborhoods near Pinnacle Peak and Pima Roads in support of desert preservation and quality development. The group proposed the establishment of Pinnacle Peak Park, and advocated the paving of Pima Road north of Pinnacle Peak Road and the creation of Scottsdale's preserve. Today, GPPA publishes the nonprofit community magazine, *A Peek at the Peak*.

## McDowell Sonoran Conservancy (MSC)

Incorporated in 1991 as the McDowell Sonoran Land Trust, it has been a driving force in the creation of the McDowell Sonoran Preserve. It champions the preservation of the Sonoran Desert and its mountains and develops a local culture of stewardship. MSC provides the City of Scottsdale with the human resources required to protect and maintain the preserve.

## "NICE DOGGIES"

& *Pretty Kitties*



The world's largest  
Charm Show

Available in 14k or 18k white, yellow or rose gold.  
Many Breeds Available

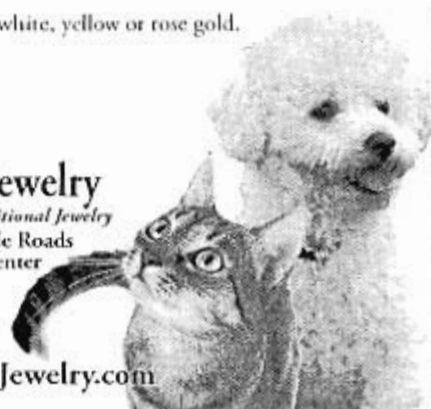
*A Tradition of Trust*

**Bennett Fine Jewelry**

*Exclusive Equestrian & Traditional Jewelry*  
Pinnacle Peak & Scottsdale Roads  
- next to the Ace Home Center

(480) 585-3080

[www.BennettFineJewelry.com](http://www.BennettFineJewelry.com)



## McDowell Sonoran Preserve

Established by the City of Scottsdale in 1995, it will total more than 36,000 acres of permanently protected desert. When completed, the McDowell Sonoran Preserve will be one of the largest urban preserves. The Preserve will be larger than Tempe and Paradise Valley combined.

## Native Plant Ordinance

In 1981, the City of Scottsdale adopted this landmark ordinance to protect large cacti and trees indigenous to the area. During the 1980s, a series of annexations added 96 square miles of essentially undeveloped desert to the City of Scottsdale, and the ordinance was enhanced to ensure that mature plants were not unnecessarily destroyed and to protect thousands of additional native plants. The ordinance has been used as a model by other cities.

## Pinnacle Peak Park

In the 1950s, '60s, '70s and '80s, Pinnacle Peak, located in the remote desert, was a popular destination for horseback riders and hikers. Today, Scottsdale's 150-acre Pinnacle Peak Park's star attraction is a moderate 1.75-mile hike and spectacular views. There are trail signs describing the plants, wildlife, geology, and cultural history of the area. The park also offers interpretive programs and periodic free guided tours.

## Scenic Corridors

Scottsdale's Scenic Corridors within the Desert Foothills are Carefree Highway (west from Scottsdale Road to the city's western boundary, 2 miles), Cave Creek Road (NE of Pima Road to the City's NE boundary, 3.5 miles), Dynamite Boulevard (east from 56th Street to the City's eastern boundary, 10.5 miles), Pima Road (north of the 101- Loop to Cave Creek Road, 11 miles), and Scottsdale Road (north from Frank Lloyd Wright to Carefree Highway, 11 miles).

## Scenic Corridor Guidelines

The City of Scottsdale has designated several major roads in the Desert Foothills as Scenic Corridors with scenic desert landscape setbacks that provide a sense of openness for the community. Scenic Corridors Guidelines preserve the natural setting, provide views of nearby landforms, visually link to vista corridors along major washes, and buffer adjacent land uses from traffic.

### For Additional Information

☎ (480) 361-6498 (Les Conklin at *The Peak*)

✉ [lesconklin@gppaaz.org](mailto:lesconklin@gppaaz.org)

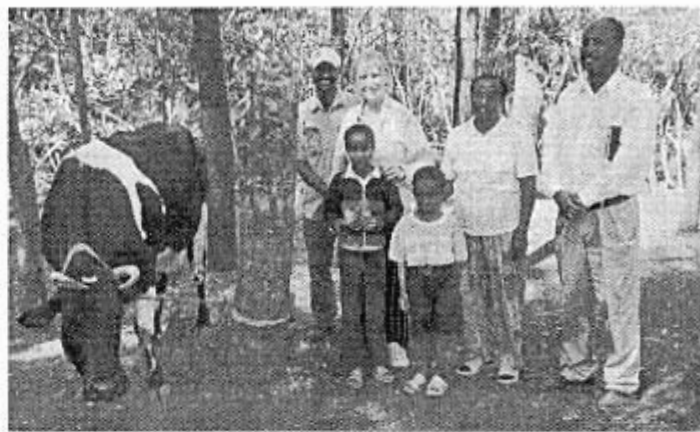
@ [www.scenicdrive.org](http://www.scenicdrive.org) (Click on Memory Park)

## Far From Home

By Edie Shannon

### Prologue

Scottsdale residents Edie and BJ Shannon do volunteer business training in emerging democracies. The purpose of the training, which is funded by the US state department, is to develop the capabilities of the newly independent states to



Edie, Ethiopian Family and Their Cow

survive and prosper on their own, and secondly to bring back business to the US.

### Editor

### Ethiopia

It's cold in Addis Ababa, down to 85 degrees with humidity to match. My skin fits, my hair is silky, and I'm sweaty. The participants in my seminar are wearing two shirts and a jacket, as it is late fall here.

There have been changes in the capital of Ethiopia since I was here nearly five years ago. Lots of construction, many more shops, and the people look more prosperous. Also, it's striking that I see fewer people on the street with chat, the narcotic of choice. Chat looks like a stick and people chew it; not the people I work with, but many of the people who have moved to the capital in search of work.

I'm staying in luxury at the government-owned and operated Hilton, which means that, like five years ago, my balcony doors don't lock, the grout is yucky, and my plastic room key has to be re-keyed twice a day. But the people are still delightful.

Every day, I'm picked up by a driver for the 50-kilometer trip to Debra Zeit. In the 1970s, the Swedish government built an airbase there, along with 20 nice looking houses for the personnel. This was during the reign of Haile Sallase, the Lion of Ethiopia. When the communists took over, they took all the land and businesses and destroyed the infrastructure. After the communists were kicked out, private businesses began to emerge.